

The City of Lufkin, Pines Theater

Audio, video and lighting equipment descriptions as of 10-2-2012

Audio

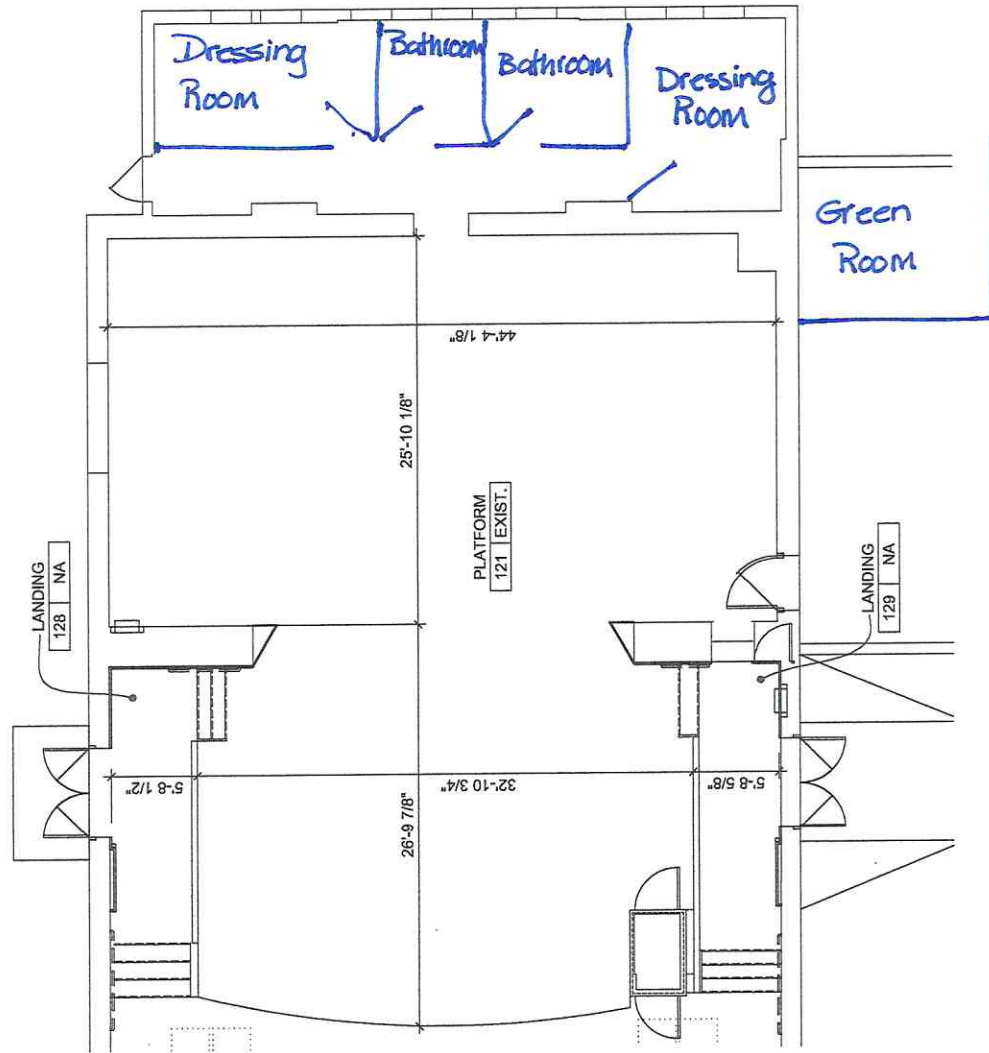
2	JBL	AM5215-95	1"x15" two way, full range stereo main speakers.
2	JBL	AM5215-95	1"x15" two way, full range stereo delay speakers.
2	JBL	AC2212-95	1"x12" two way, full range mono balcony delay speakers.
2	JBL	SRX728S	Dual 18" subwoofers. Aux fed.
4	JBL	JRX112m	1"x12" two way, full range stage monitors.
2	Crown	DSI1000	Power amplifiers for balcony fills and stage monitors. Integrated digital signal processing. 475w per channel. Stereo.
2	Crown	DSI2000	Power amplifiers for main and delay speakers. Integrated digital signal processing. 800w per channel stereo.
1	Crown	DSI4000	Power amplifier for subwoofers. Integrated digital signal processing. 1200w per channel. Stereo.
1	Yamaha	M7CL-48	Digital audio mixer. 48 mono channels. 4 stereo channels. 16 mix busses. LCR bus. 8 matrices. 8 DCA's. 4 internal effects engines. 300 scene recall.
2	Shure	SLX24SM58	Wireless handheld microphones. SM58 heads.
4	Shure	SLX14MMPSM	Wireless headset microphones. Countryman E6 type elements.
1	Shure	WL185	Cardioid lavalier microphone.
2	Shure	UA844SWB	Active antenna combiners.
2	Shure	SM58	Wired handheld vocal microphone.
1	Tascam	CD-200i	Single well CD player with integrated iPod/iPhone dock and 3.5mm Aux input.
1	General	Misc.	4 stage pockets with (8) microphone jacks and (1) monitor "A" and (1) monitor "B" jack each.

Video

1	Dalite	38697L	177" x 236" electric retractable screen. 1.0 screen gain.
1	Panasonic	2x PTDW730UK	Stack. (2) 7000 lumen 1-chip DLP projectors. Yield is 48.2 fL. Native resolution is 1280x800. 720p HD without scaling.
1	Extron	IN1508	8 input switcher / scaler. (2) CV, (2) YC, (1) YUV, (2) HD15, (1) DVI-D. 720p HD output.

Lighting

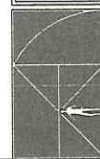
1	Lightronics	TL-2448 D	Lighting console. 48 conventional channel faders. 8 moving light / sub master control. LED compatible. 1200 scenes. 600 cue stack. Built in soft patch. 1 DMX-512 universe.
18	Elation	DP-DMX20L	4 ch x 600w dimmers. DMX-512.
12	ETC	S419	Source 4 - 19deg ellipsoidal. HPL575-115
20	ETC	S4PARCL	Source 4 Par. HPL 575-115
14	Chauvet	Colorado 1 Tour	LED PAR. RGBW color mixing. DMX-512.
1	Chauvet	Data Stream 4	DMX-512 optical splitter. 4 additional buffered outputs. Outputs are 3 or 5 pin. Located at the stage for floor light positions.



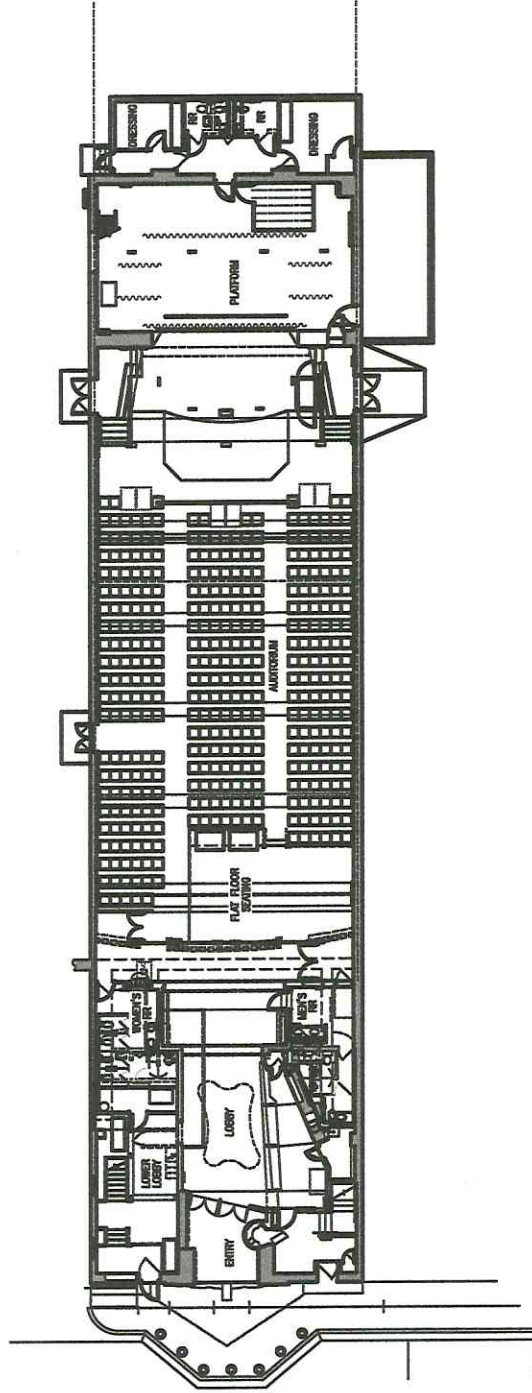
SCOTT AND STRONG
 ARCHITECTS INTERIOR DESIGN
 1608 S. CHESTNUT LUFKIN, TEXAS
 (936) 634-4475 SUITE 202 75901

PINES THEATER STAGE DIMS.

Scale: 1/8"=1'-0"

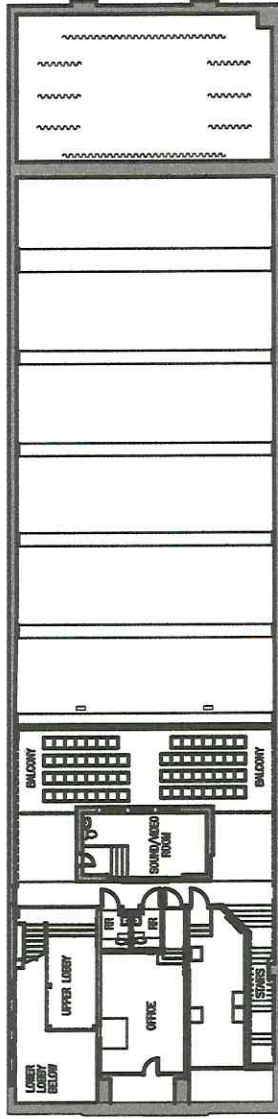


2014/2010



PINES THEATER 1ST FLOOR
FLOOR PLAN

SCALE: $1/32" = 1'$



PINES THEATER 2ND FLOOR

FLOOR PLAN

SCALE: $1/32" = 1'$